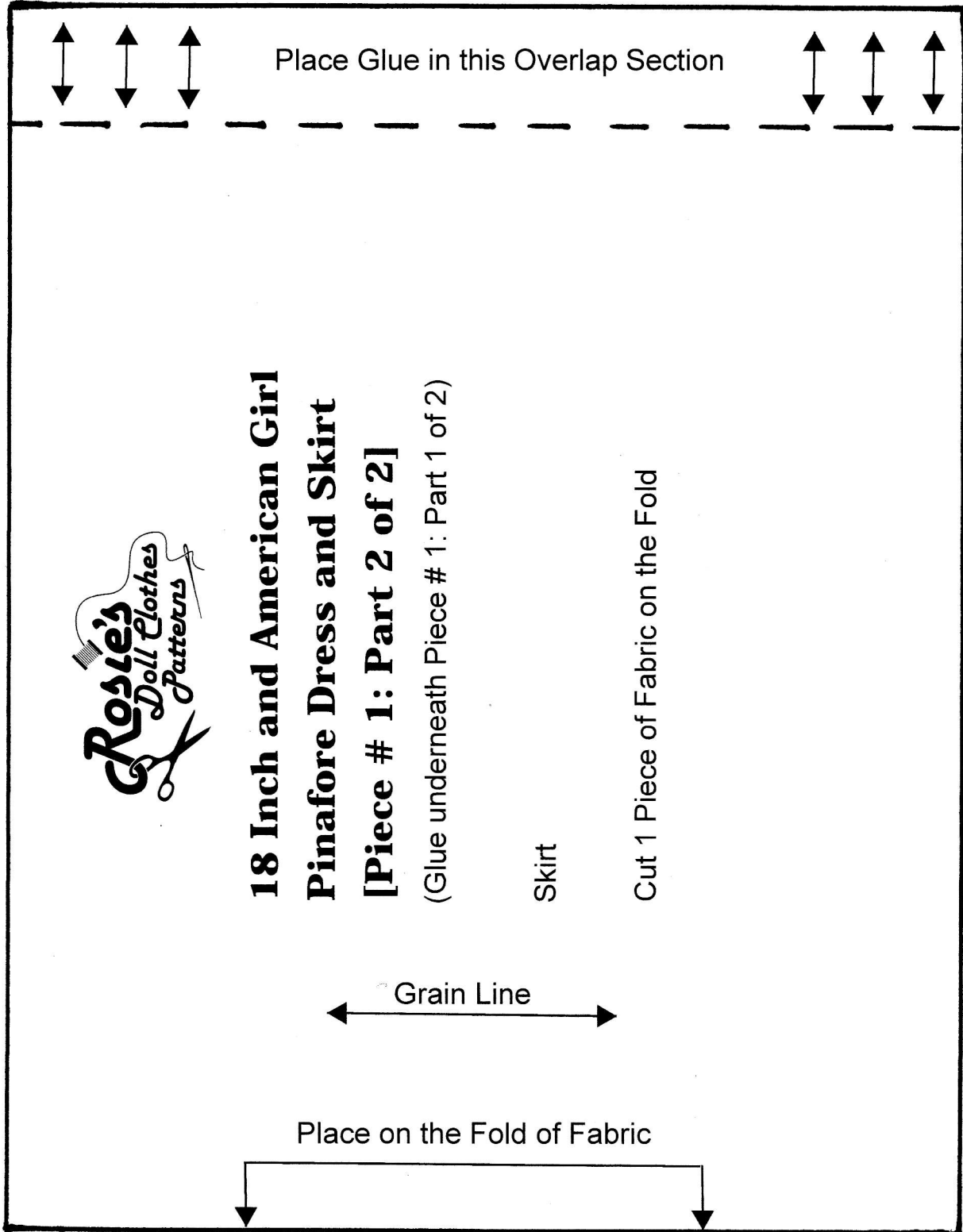


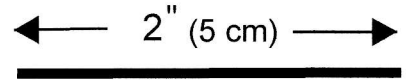
18 Inch and American Girl Pinafore Dress and Skirt

← 2" (5 cm) →


Tip: Check This Measurement
Before Cutting Pattern




**18 Inch and American Girl
Pinafore Dress and Skirt**



Tip: Check This Measurement
Before Cutting Pattern


**18 Inch & American Girl
PINAFORE DRESS**
[Piece # 2]
Bodice Bib
Cut 1 Piece of Fabric
Grain Line


**18 Inch & American Girl
PINAFORE DRESS AND SKIRT**
[Piece # 1: Part 1 of 2]
(Glue on Top of Part 2)
Skirt
Join to Dashed Line

18 Inch and American Girl Pinafore Dress and Skirt

← 2" (5 cm) →

Tip: Check This Measurement Before Cutting Pattern

