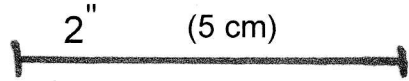


**18 1/2 Inch Cabbage Patch Kids
Winter Pyjamas**



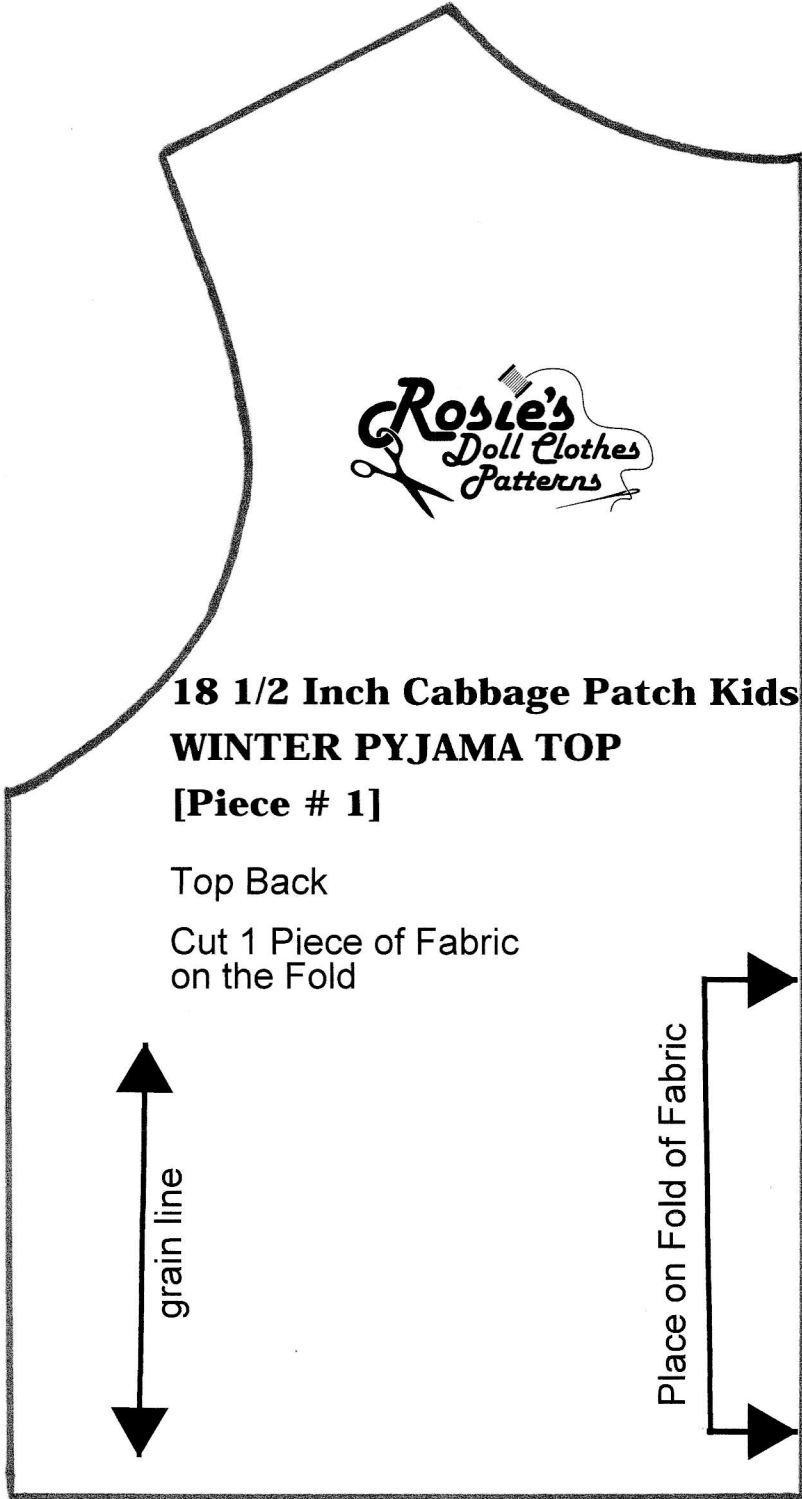
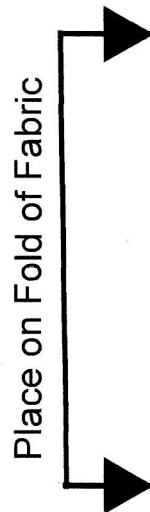
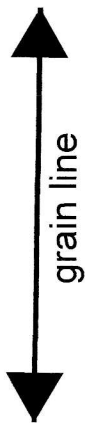
Tip: Check This Measurement
Before Cutting Pattern



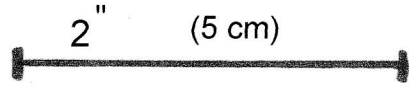
**18 1/2 Inch Cabbage Patch Kids
WINTER PYJAMA TOP
[Piece # 1]**

Top Back

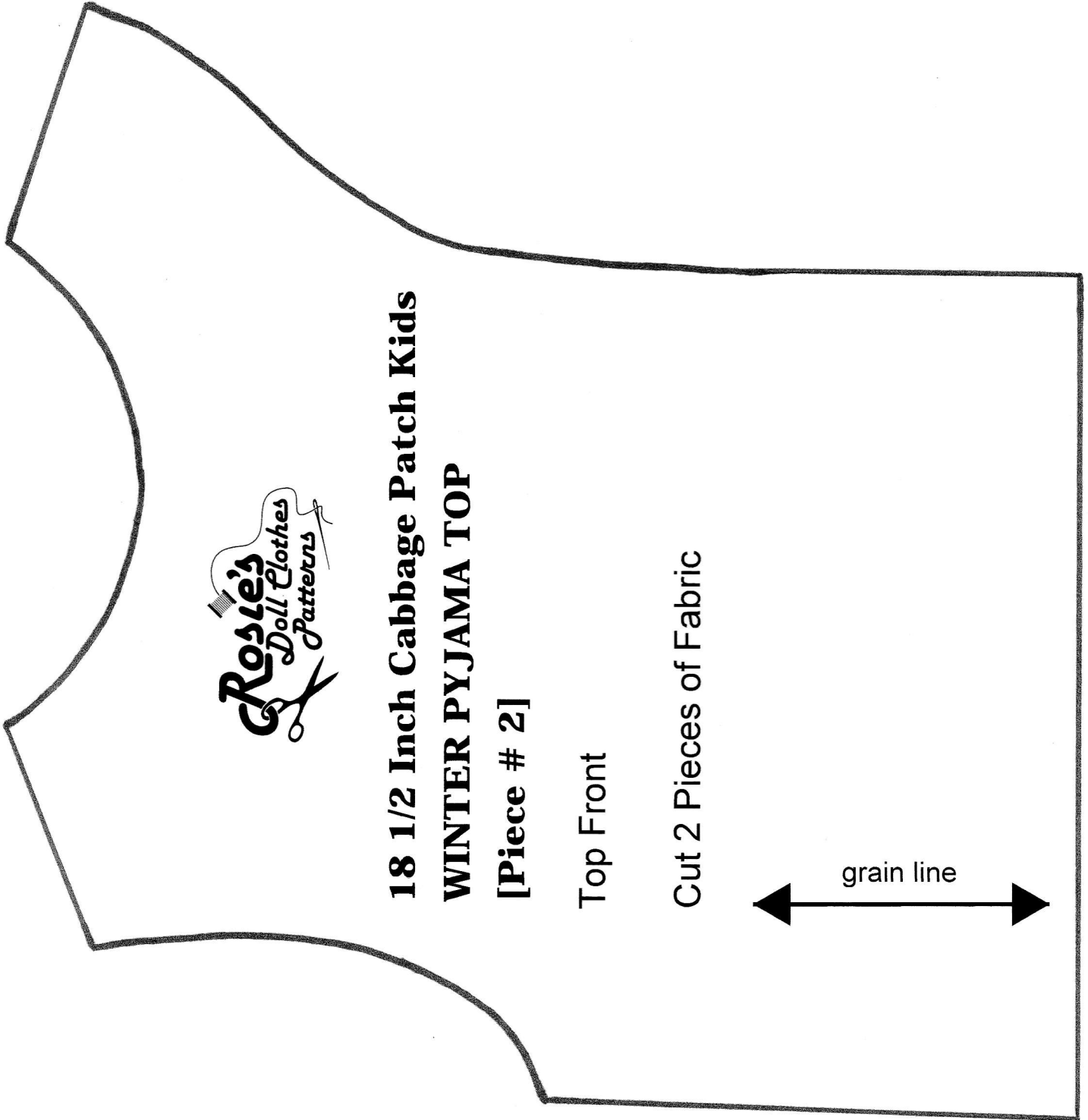
Cut 1 Piece of Fabric
on the Fold



**18 1/2 Inch Cabbage Patch Kids
Winter Pyjamas**



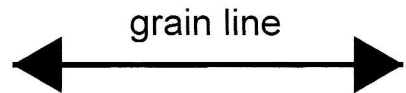
Tip: Check This Measurement
Before Cutting Pattern



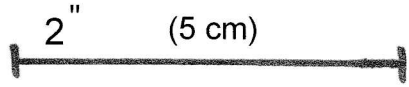
**18 1/2 Inch Cabbage Patch Kids
WINTER PYJAMA TOP
[Piece # 2]**

Top Front

Cut 2 Pieces of Fabric



18 1/2 Inch Cabbage Patch Kids Winter Pyjamas



Tip: Check This Measurement
Before Cutting Pattern

