

**18 1/2 Inch Cabbage Patch Kids
Fun 'n Frilly Top**

← 2" (5 cm) →

Tip: Check This Measurement
Before Cutting Pattern



**18 1/2 Inch Cabbage Patch Kids
FUN 'N FRILLY TOP**

[Piece # 1: part 1 of 2]

(Glue On Top of Part 2)

Top Front & Back

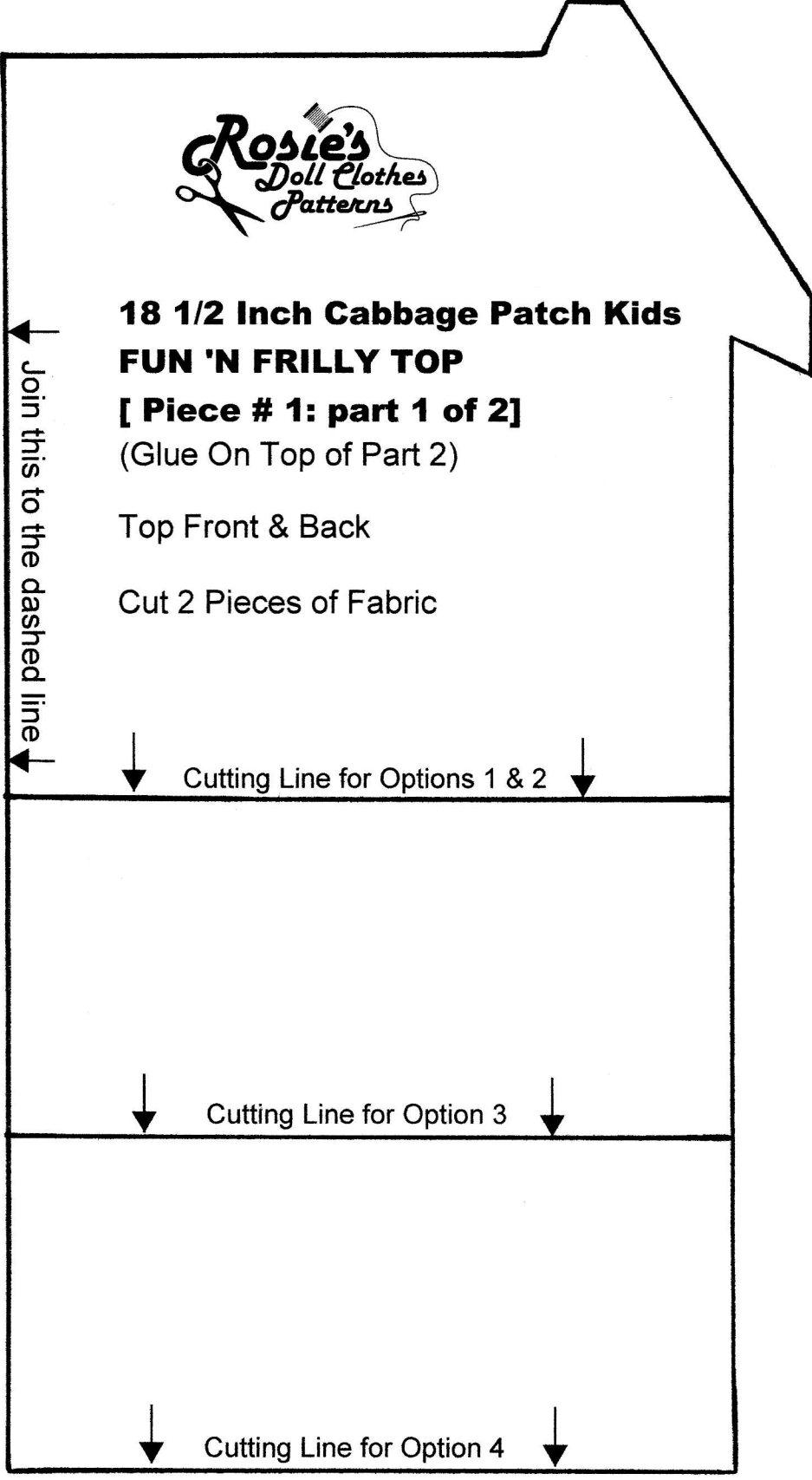
Cut 2 Pieces of Fabric

Join this to the dashed line ↓

↓ Cutting Line for Options 1 & 2 ↓

↓ Cutting Line for Option 3 ↓

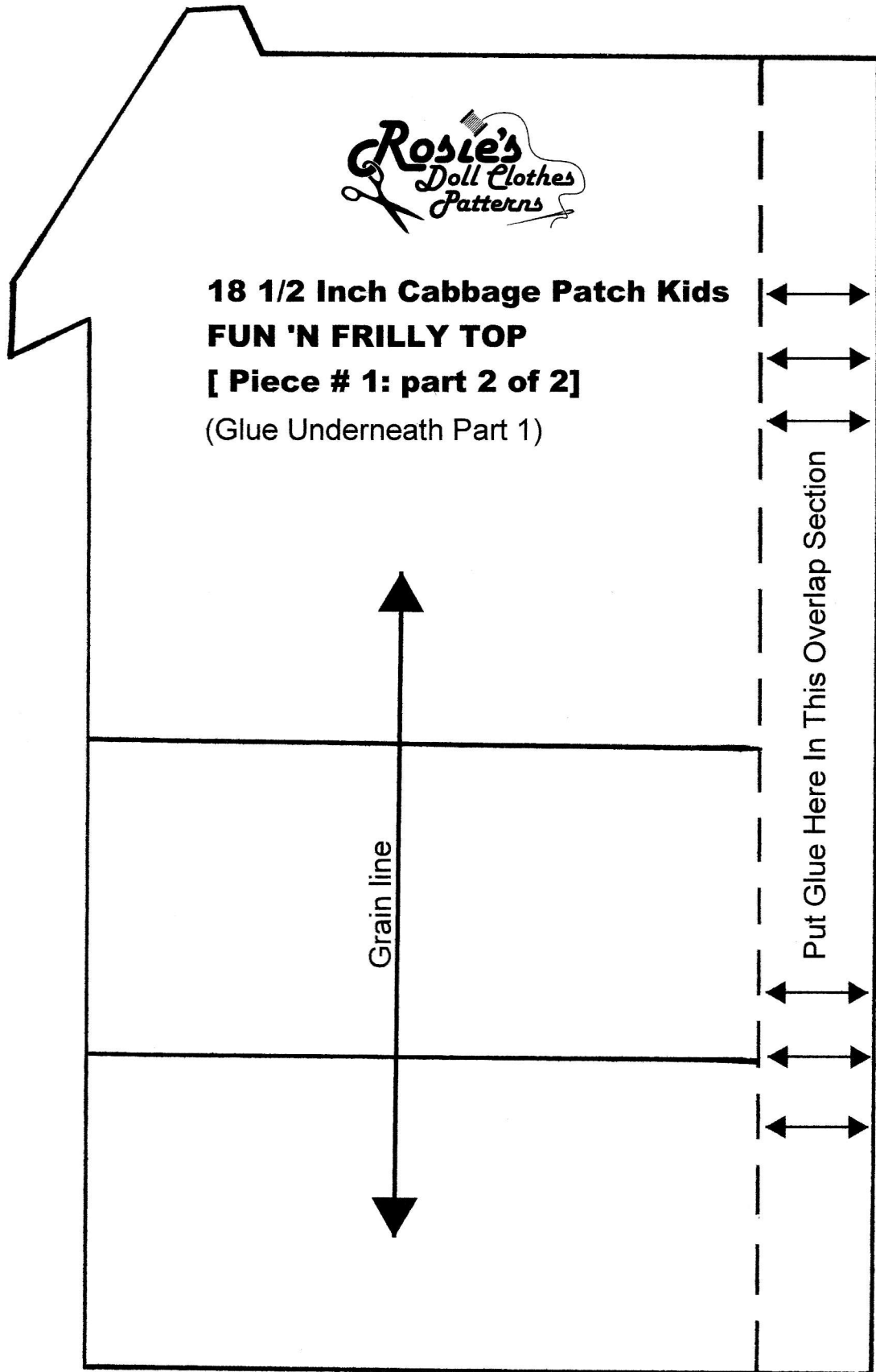
↓ Cutting Line for Option 4 ↓



**18 1/2 Inch Cabbage Patch Kids
Fun 'n Frilly Top**

← 2" (5 cm) →

Tip: Check This Measurement
Before Cutting Pattern



**18 1/2 Inch Cabbage Patch Kids
Fun 'n Frilly Top**

← 2" (5 cm) →

Tip: Check This Measurement
Before Cutting Pattern

